

WHY IAITMH ENDORSEMENT?



Serious shortages in mental health workforce capacity affect all agencies, programs and settings where young children are served in Indiana. The Indiana Association for Infant and Toddler Mental Health (IAITMH) is addressing this need by providing a competency-based endorsement process for all providers involved with the care and support of infants and young children and their families. This endorsement will enhance professional credibility and provide Indiana families greater access to well-trained providers closer to home.

Individuals who earn the endorsement say it has enhanced their professional development. Families benefit from greater access to well-trained providers of child care, family support and mental health services. Agencies find the endorsement helpful in structuring training and ensuring a well-prepared early care and intervention workforce.

Indiana's Endorsement is made possible by support from these partners:

Indiana Head Start Collaboration

Indiana Department of
Child Services

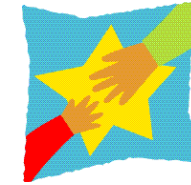
Indiana Department of Health's
Sunny Start Project



**Indiana Association for Infant and
Toddler Mental Health (IAITMH)**

1431 N. Delaware Street
Indianapolis, IN 46202

317-638-3501, ext. 228
Email tpeek@mhai.net
www.iaitmh.org



**Indiana Association
for Infant and
Toddler
Mental Health**

**Endorsement
for culturally sensitive,
relationship-focused
practice promoting infant
mental health**



www.iaitmh.org

IAITMH: A PATH TO PROFESSIONAL ENDORSEMENT



What is endorsement?

Endorsement supports and recognizes the development of professionals who work with or on behalf of infants, toddlers and their families. This process uses a nationally recognized set of competencies that defines best practice and guides professional growth.

The four levels of endorsement correspond to education, skills and experience:

- Infant Family Associate: Level 1
- Infant & Family Specialist: Level 2
- Infant Mental Health Specialist: Level 3
- Infant Mental Health Mentor: Level 4

Endorsement establishes a set of professional competencies, assures that professionals provide culturally sensitive, relationship-based services that promote infant and toddler mental health, and recognizes the importance of continuing education and training.

Who can apply?

All professionals who have experience working with or on behalf of infants, toddlers, parents and/or other caregivers and who meet the educational, work, training and reflective supervision/consultation requirements of any endorsement level may apply.

Why should I apply?

- Endorsement helps you grow and develop as a professional in the rapidly expanding infant and family service field.
- Endorsement ensures you'll be recognized by employers and peers for having attained a level of competency in culturally sensitive, relationship-focused practice that promotes mental health.



**FOR MORE INFORMATION ABOUT
IAITHM ENDORSEMENT, VISIT
WWW.IAITHM.ORG
OR CALL 317-638-3501 EXT. 228**

- Endorsement helps you better support infants, toddlers, families, students, agencies and institutions in the promotion of infant and toddler mental health.

How do I apply?

1. Contact the IAITMH endorsement coordinator Tiffany Peek at 317-638-3501, ext. 228, or at tpeek@mhai.org. Or simply download a preliminary application at www.iaitmh.org.
2. Complete and submit the preliminary application, including the application fee and the IAITMH membership fee.
3. Prepare and submit a completed professional portfolio* along with the endorsement processing fee.
4. IAITMH will document your competencies, which includes a two-level portfolio review and (for levels 3 and 4 only) successful completion of a written exam

*The professional portfolio includes the completion of an e-form listing your training and experiences; sealed official transcripts from every college/university attended; three sealed reference rating forms; a signed code of ethics; a signed endorsement agreement; and an endorsement processing fee for the level at which the applicant is applying.

For a list of competencies needed for each of the four levels of endorsement, please see the document, "IAITMH Endorsement Levels of Competency."